

IMPORTANT

CONSUMER ADVICE CONTACT DETAILS

Interpet (Blagdon) Consumer Advice Department

Vincent Lane, Dorking, Surrey RH4 3YX

Telephone: 0845 226 7437

(Monday to Friday 10am to 4pm except Bank Holidays - Times may vary)

Fax: 01306 876712 **E-mail:** customer-care@interpet.co.uk

GUARANTEE

This product is guaranteed against defects in material and workmanship for 2 years from the date of purchase, under normal usage. The guarantee DOES NOT APPLY in case of improper use, negligence, lack of maintenance or accidental damage to the UVC. If the UVC fails due to a manufacturing fault within this period it will be either repaired or replaced free of charge. Liability is limited to replacement of the faulty product only; no other costs will be reimbursed.

This guarantee is not transferable and does not affect your statutory rights. This guarantee does not confer any rights other than those expressly set out above. This guarantee does not cover the UVC lamp, which will need replacing when worn or every 6 months. If any parts are needed, spares are available from your retailer.



Established over 40 years ago, Blagdon are committed to producing a comprehensive range of high quality, easy to use, pond equipment. An ongoing programme of research and development ensures excellent performance and value for all their customers. This product excellence is demonstrated by Blagdon's award winning range of water gardening equipment. As a result Blagdon's reputation for quality is unrivalled amongst experienced pond gardeners and retailers alike.

Blagdon - The Pond Masters The name you can rely on

Interpet, Dorking, Surrey, RH4 3YX

www.BlagdonThePondMasters.co.uk

Leaflet Code: POS TE18



THE POND MASTERS GUIDE TO

MINIPOND

GREEN WATER UV CLARIFIER 4500/6000





**THE POND MASTERS GUIDE TO
MINIPOND
GREEN WATER
UV CLARIFIER
4500/6000**

**Congratulations on buying a Blagdon
Minipond Water Garden UVC System.
Manufactured with advanced UVC
technology to create a clear and
healthy pond for your fish.**

IMPORTANT

Please attach proof of purchase to this manual and file in a safe place.

CONTENTS

Getting to know your Minipond UVC 2
 Parts description 2
 Spares codes 2
 How it works 3
 Technical specification 3

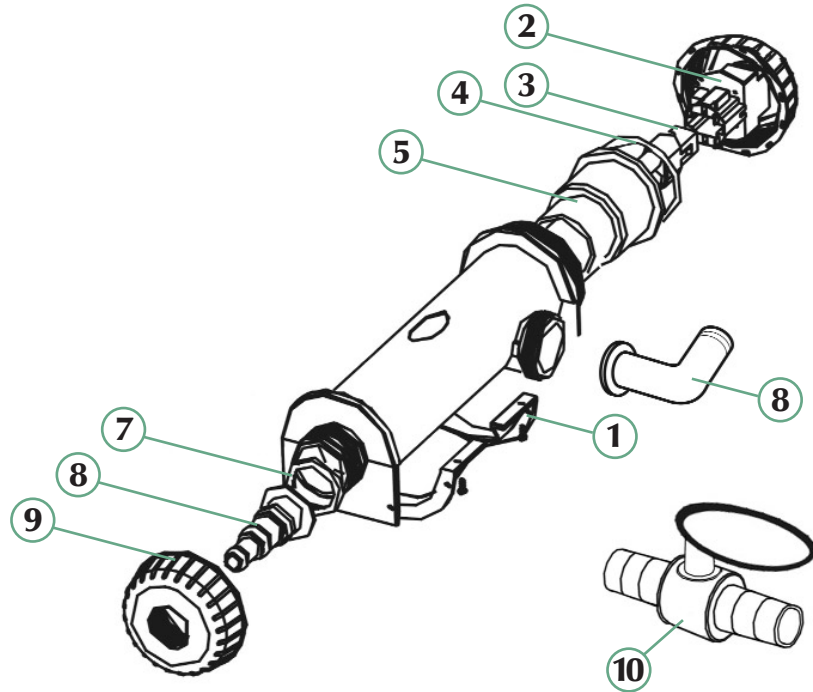
Installation 4 - 7
 Convenient installation 4
 Connecting hoses 4
 Connecting to your pump 5
 UVC lamps and Quartz sleeve maintenance 5
 Wet testing the UVC 5
 Testing/replacing the UVC lamp 6
 Electrical installation 6 - 7

Maintenance & cleaning 7
 Annual maintenance 7
 Winter storage 7

Troubleshooting 8 - 9
 UVC leaks 8
 Cloudy/brown water 8
 Green water 9
 UVC light not illuminated 9

Faults problems procedure 9 - 10
 Consumer advice contact details 10
 Guarantee 10

GETTING TO KNOW YOUR MINIPOND UVC

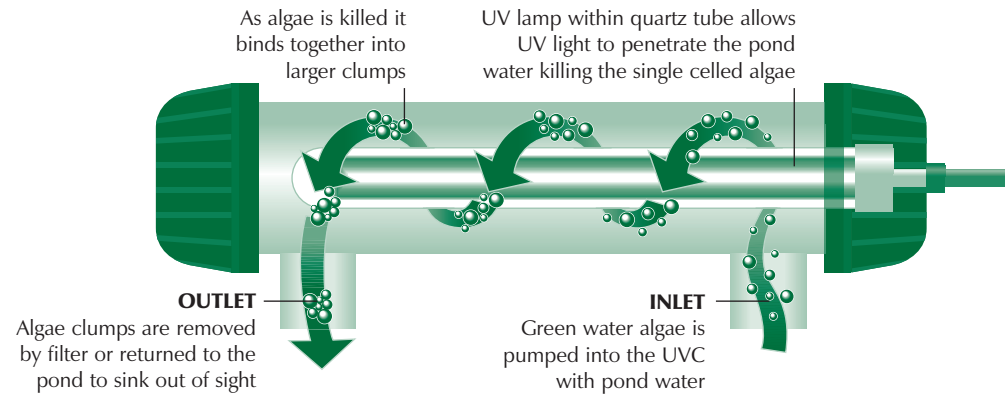


Part Description	Spare Code
1 UVC feet/hinge locating screws	1040679
2 UVC electronics & cap	N/A
3 9w & 5w lamp (9W) (5W)	1040655 1041041
4 UVC O-ring gasket	1041065
5 Quartz sleeve 9w/5w	1041058

Part Description	Spare Code
6 UVC contact chamber	1040662
7 Inlet hose tail O-ring gasket	1040686
8 Inlet 1" 3/4" 1/2" hoesetail 1" elbow hoesetail	1040693
9 Inlet cap	N/A
10 Optional 1" 25mm flow control valve (not included)	1040563

GETTING TO KNOW YOUR MINIPOND UVC

HOW A UV CLARIFIER WORKS



TECHNICAL SPECIFICATION CHART

UVC Model	Max pond size over 75cm / 2'6" average depth shaded	Pond in full sunlight	Shallow pond - under 75cm/2'6" average depth	Pond in full sunlight and shallow
4500	4500ltr/990gal	3375ltr/742gal	3375ltr/742gal	2531ltr/557gal
6000	6000ltr/1320gal	4500ltr/990gal	4500ltr/990gal	3375ltr/742gal

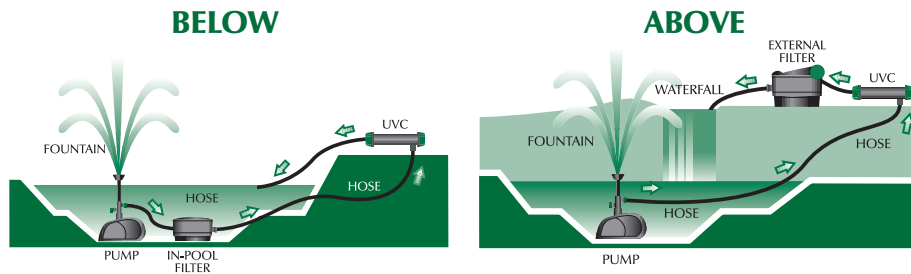
UVC Model	Pond with Koi full sunlight and shallow	UVC Model Watts	Recommended Max Flow	Recommended Hose Size	
				Inlet	Outlet
4500	1265ltr/278gal	5W	2250ltr/495gl	25mm/1"	25mm/1"
6000	1687ltr/371gal	9W	3000ltr/660gal	25mm/1"	25mm/1"

MINIPOND UVC	4500	6000
Watts	5W	9W
Voltage	230V	230V
Hertz	50Hz	50Hz
Safety rating	IP56CE	IP56CE
Cable	5 metres	5 metres

INSTALLATION

CONVENIENT INSTALLATION

Minipond UVC can be used in conjunction with any in-pool or external filter for effective control of green water.



IMPORTANT

The outlet hose should be installed over as short a distance as possible with no kinks or bends.

We recommend that Blagdon hose is used.

CONNECTING INLET HOSES

The recommended hose size for your Minipond UVC is stated in the UVC performance and specification chart.

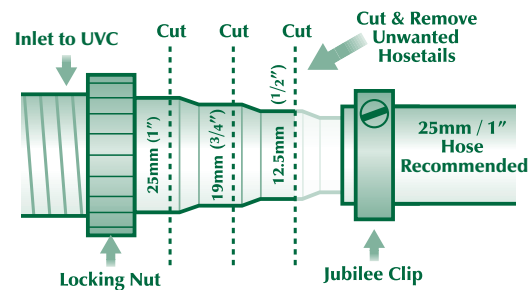
Always secure hose with a jubilee clip.

Warming the hose in a bucket of boiling water can aid fitting.

Always ensure that the smaller diameter hosetail is cut off and removed to prevent reduced UVC performance.

Use the shortest possible hose lengths to minimise flow restrictions.

Avoid folds and kinks in the hose, which will reduce flow and UVC performance.



INSTALLATION

CONNECTING TO YOUR PUMP

The pump supplying the Minipond UVC must not have a pumping head exceeding 4m - 0.4 Bar.

The maximum flow rate recommended is stated in the UVC performance and specification chart.

This flow should not be exceeded.

The ideal flow rate for your pond is to pump the volume of the pond water through the UVC every 2-4 hours. To calculate your pond volume: average length (m) x average width (m) x average depth (m) x 1000 = Litres Pond Volume.

To calculate your pump's flow rate, fill a container from the outlet hose of the UVC at the pond side.

Time how long this takes in seconds e.g. a 10 ltr bucket takes 12 seconds to fill. Divide 3600 (the number of seconds in an hour) by the time it takes to fill the bucket e.g. 12 seconds. Then multiply by the volume of the container. e.g. 10 ltr. Therefore - $3600 \div 12 = 300$ seconds $300 \times 10 \text{ ltr} = 3000$ ltrs per hour flow rate.

To increase flow you may need to get a larger pump. If flow is too high use an inline valve to reduce it.

The purpose of the pump is to transfer green water from the pond to the Minipond UVC.

Placing the pump at the opposite end of the pond to the UVC will give the best results.

We recommend Blagdon Amphibious A Pond Pumps, Minipond 2000, Hydratech Multi or Hydratech Torrent Pond Pumps.

UVC LAMPS & QUARTZ SLEEVE MAINTENANCE

The UVC lamp must be replaced every six months / once a season. It is recommended that the lamp is replaced and reconnected in the spring.

The Quartz sleeve can become coated in lime scale build up in hard water areas. This should be carefully removed from the quartz sleeve with a soft cloth.

Blagdon Pond Pump Cleaner should be used in stubborn cases.

Remove the quartz sleeve from the unit and soak for 3 hours in Pump Cleaner, ensuring that all O-rings are checked and replaced, if necessary.

A wet test must be carried out after maintenance to ensure there are no leaks before the UVC is reconnected.

WET TESTING THE UVC

IMPORTANT: A wet test of the UVC under operating conditions must be carried out before the UVC or electrical supply is installed.

Connect the UVC to the pump following all installation instructions.

After running for 24 hours check for leaks.

INSTALLATION

TESTING/REPLACING THE UVC LAMP

IMPORTANT: Ensure that the mains supply is switched off and the power isolated before removing the UVC cover.

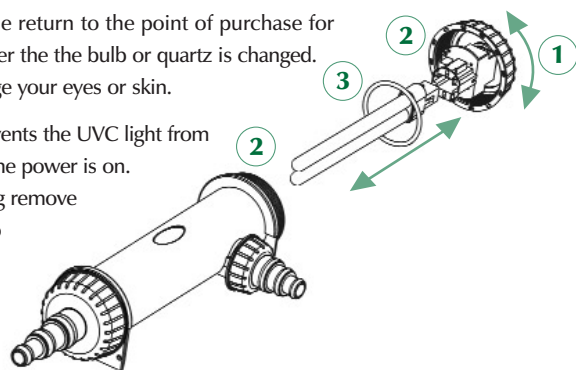
1. Unscrew the UVC electronics cover cap.
2. Inspect the UVC cap and Quartz sleeve for water leaks.
3. If there are no signs of leakage reverse the procedure ensuring that the Cover O-ring is in place.

If there has been any damage to the unit please return to the point of purchase for inspection. This test should be repeated whenever the bulb or quartz is changed.

Warning direct exposure to UVC light can damage your eyes or skin.

This unit is protected by a micro switch that prevents the UVC light from illuminating when the cover is removed even if the power is on.

In order to check that the UVC lamp is operating remove the hosetail and hold a piece of plain paper up to the UVC outlet a faint blue reflection should be seen. This operation may need to be carried out at dusk as UVC lamps emit a dim blue light under normal operation.



ELECTRICAL INSTALLATION

Electrical installation - UVC



The power supply must meet the specifications on the product.

The UVC is intended to be used with either a weatherproof cable connector or permanently connected to the fixed wiring in the main system other than by means of a plug and socket.

The cores in the supply cable are coloured in accordance with the following code:

Brown = Live, Blue = Neutral.

Do not use the supply cable to lift the UVC as this may cause damage.



WARNING - A Residual Current Device (RCD), also known as the Residual Current Circuit Breaker (RCCB), with a tripping current not exceeding 30mA must be installed in the supply circuit. A means of disconnection from the supply having a contact separation of at least 3mm in all poles must be incorporated in the wiring.

ELECTRICAL INSTALLATION

IMPORTANT: Please note all electrical work on garden lighting and power installations must comply with part P of the building regulations. Failure to comply is a criminal offence. If the installation of this product is not carried out by a competent electrician who is registered under the Part P self-certification scheme then you must notify the local building control department before work begins. For further information and guidance on this matter and other electrical installations in your home that might be covered by the relevant legislation, contact your local authorities building control department.

For permanent installations to the mains supply, it is necessary to conform to the regulations of the local electricity authority and this would include the use of a metal or plastic conduit to protect the cable.

Attention has been drawn to the fact that special rules may exist concerning the installation of your pond UVC (i.e. local building regulations).

This UVC must not be used in swimming pools, or areas where people are in contact with the water.

Always disconnect the mains electricity supply whilst the equipment is being installed, repaired, maintained or handled. Consult a qualified electrician if in any doubt about wiring this product to the mains supply.



Electrical/Safety

UVC Warning: Caution - Dangerous Ultra Violet Radiation. The rays from the UVC lamp are harmful to eyes and skin.

Always turn off UVC electrical supply before any maintenance.

To protect unit from flooding, leave a minimum 5cm showing above ground level to protect UVC electrics.

Never immerse unit in water.

Locate unit 1m minimum from pond edge to ensure the UVC cannot fall in.

MAINTENANCE & CLEANING

Annual maintenance

Check for wear

Once a year you should dismantle your Minipond UVC. Dismantle the UVC examining all the parts for wear or damage, replacing any parts show obvious signs of wear or damage. (see getting to know your Minipond UVC for replacement codes and parts descriptions on page 2).

Winter storage

The UVC can be run year round if the pump flow is maintained, this is the best option. Alternatively in winter the UVC may be switched off. Follow annual maintenance procedure and store frost-free in the house or garage until spring.

TROUBLESHOOTING

In order to correctly identify if you have green water or cloudy/brown water, a settlement test should be carried out.

Take a glass of pond water and allow to settle for a few hours. When the glass is stirred a small layer of settled waste can be seen at the base of the glass. This indicates that you have brown or cloudy water and that your UVC is working correctly. If there is no settlement it indicates that you have green water and the UVC is not working correctly.

UVC leaks

- Check that the UVC outlet nut and O-ring have been correctly assembled and that they are hand tight.
- Check the hosetail connector O-ring seal is fitted and aligned correctly on the end of the hosetail fitting and that the inlet cover is hand tight.
- PTFE tape may be needed to give a water tight seal and should be applied to the inlet or outlet hosetails.
- Always secure the UVC inlet hose and outlet hose with a jubilee clip.
- Insure that the UVC is installed on a flat and level base.

Cloudy/brown water

- The flow rate / pond turnover is to high or to low. Check that you have correctly calculated the pond volume and that pump flow rate is within limits. (see connecting your pump page 6)
- The filter is not being supplied with water 24 hours a day. Do not turn off your pump or UVC. Continuous running is needed to maintain a clear and healthy pond.
- Your filter foam pads are insufficiently blocked to trap the fine waste. Treat with Interpet Clear Pond treatment.
- Do not clean filter foams or media until it is thoroughly blocked.
- The water is extremely dirty, remove pond waste and leaves - carry out a partial water change.
- Filter is incorrectly sized - refer to your filter performance and specification chart. Calculate the pond volume.
- The filter foams or media have not been positioned or replaced correctly, ensure that the foams/ media fit tightly within the filter.

TROUBLESHOOTING

Green water

- Settlement test the water to ensure that there is no sediment suspended in the water. If there is, follow the brown cloudy water trouble shooting guide.
- In order to check that the UVC lamp is operating, view the translucent hose tail, a faint blue light should be seen. This operation may need to be carried out at dusk as UVC lamps emit a dim blue light under normal operation. Turning the lamp on and off may aid visual identification. (Ensure the UVC lamp is not more than 6 months old).
- The UVC may be working effectively but the filter foams are too clean and are unable to remove the fine coagulated waste. Treat the pond with Interpet Clear Pond and do not clean the foams until the foams are blocked.
- The flow rate of the pump exceeds the maximum flow rate that the UVC is able to handle. Check the UVC specification chart and reduce the pump flow rate if needed. It is possible to purchase an optional Blagdon 1" flow control valve that may be fitted inline between the pump and the UVC to control the flow rate. See getting to know your UVC diagram and parts codes.
- The filter is too small for the pond, check your filter selection chart.
- The UVC quartz sleeve is dirty or coated in lime scale. Gently remove the quartz sleeve and clean in Blagdon Pond Pump Cleaner.
- Follow all cloudy water trouble shooting points.

UVC light not illuminated

- Check all fuses / RCD and electrical connections follow electrical installation (pages 7-8).

IMPORTANT

FAULTS - PROBLEMS PROCEDURE

Before returning your Minipond UVC to your dealer or contacting our Consumer Advice Department, please carry out the following steps. This will solve most problems quickly and easily.

1. Ensure electrical procedures have been followed fully. Check fuses and any cable connectors/switch boxes.
2. (a) Follow maintenance procedure fully. (b) Check location and connecting your pump details including flow rates. (c) Ensure that your pond volume and pump flow rate meet the maximum pond size recommended for the filter model on the filter performance and specification chart. (d) Follow troubleshooting guide.
3. If there is a mechanical breakdown of the UVC, return to the point of purchase for inspection and advice (You will need proof of purchase).